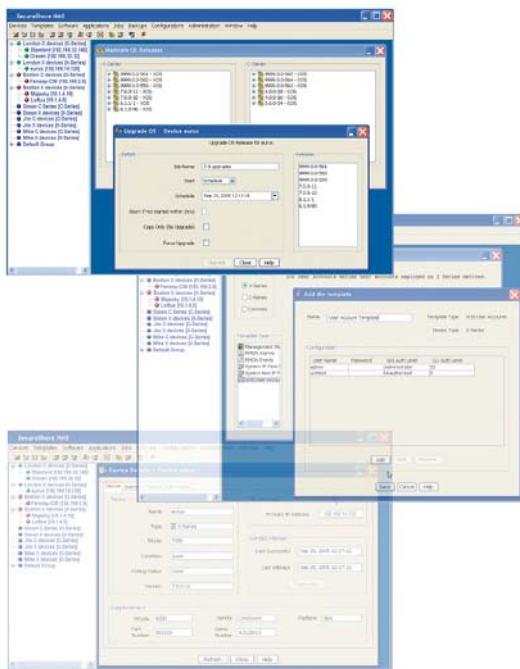


We secure the world's largest networks.

SecureShore[®]

Network Management System



SecureShore Network Management System (NMS) is a comprehensive multi-element network management system, perfect for multi-box configuration, OS backup and restore, reporting, application distribution, and event scheduling – just the tool needed to secure the world's largest networks.

ENTERPRISE- AND PROVIDER-CLASS NMS

SecureShore provides full configuration, management, and monitoring support for all Crossbeam X- and C-Series security switches. Deep feature configuration support and multiple automation options make SecureShore the right fit for the enterprise with five devices or the provider with 1000.

SIMPLE, INTUITIVE USER INTERFACE

The browser-based SecureShore user interface uses cascading folders and nested windows to provide a quick overview of all monitored devices. A color-code next to each device folder indicates the overall health status. Open folders with a simple click to drill down for full security switch information. Role-based access allows the administrator to grant access based on tiered organizational responsibilities.

RAPID ROI

SecureShore has a simple interface and powerful feature controls allowing enterprises and service providers to quickly and securely configure, manage, and monitor the Crossbeam network. With one tool for all X- and C-Series management, configuration errors are minimized, deployment times are reduced, and sound security investment choices quickly bear fruit.



Crossbeam SecureShore

Features

Graphical User Interface

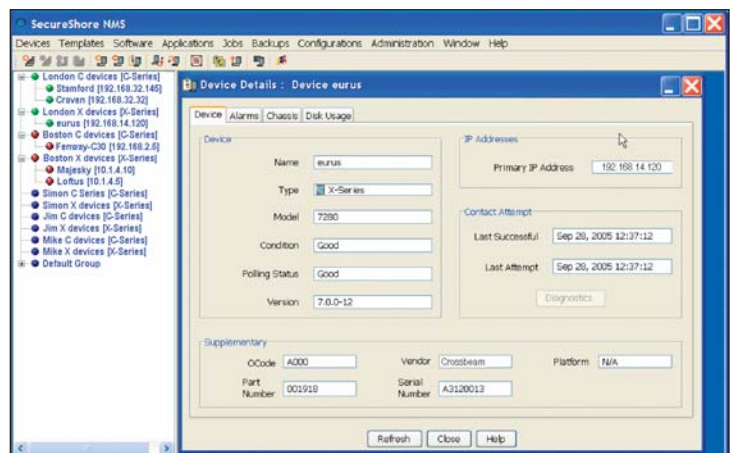
Using client/server architecture, SecureShore provides fast, secure, local, and remote management access. The browser-based SecureShore client can be loaded onto any desktop system, while the SecureShore server can run on Linux, or on Crossbeam C2 or C6 platforms.

The graphical user interface (GUI) is fast, loads instantly, and is easy to use. Help is provided for all dialog boxes and pages, and includes a standard windows-based search tool. The GUI is split between two panes, one for grouped devices and another for dialog box tools. For enhanced flexibility the user can observe different boxes for multiple devices. Windows can be resized and tiled for device-by-device comparison. Right-click mouse options provide instant access to the tools for individual devices, or named groups of devices. The tools can also be selected through quick click graphic buttons or from the menu list.

Device Grouping and Management

SecureShore allows Crossbeam devices to be gathered into logical groups, allowing actions to be performed on multiple devices simultaneously.

Once a group is created, SecureShore periodically polls the device, collecting relevant information, statuses and alarms. The top level device view displays color-based device alarm status – red/green/orange/blue – to indicate the appropriate status level, which rolls up to the group level for easy monitoring. To obtain full status information, simply select and interrogate the device.



Details polled from the selected device. Information tabs include alarms, chassis configuration, and disk usage.

Pre-defined Templates

SecureShore contains several pre-defined device templates to aid in changing or updating parameters such as SNMP or DNS information across multiple devices. To change one of these parameters, simply select the appropriate template, update the parameter, and push it to all identified groups or devices. This feature significantly reduces the time typically required to perform this function.

Flexible, Multi-device Backup and Restore

SecureShore has powerful backup and restore capabilities allowing groups of devices to be backed up simultaneously and their configuration and system files stored in the database. For added system flexibility, user-defined files and directories can be added to any backup permitting application specific data to also be backed up. Backup jobs can be scheduled on a recurring basis; e.g., daily, weekly, etc.

In the event of system failure, SecureShore can restore a known configuration to the device. Once imported, a backup can be compared to the current state of the device. This is useful when determining configuration changes.

Key Benefits

Application, XOS and COS Maintenance

Using SecureShore is the best way to maintain device operating systems and applications across a range of Crossbeam devices. SecureShore displays a simple view of all Crossbeam platform operating systems and the pre-installed application releases. SecureShore can schedule updates to any device or device group, and can either copy the software to the device, or copy and initiate the upgrade. Currently, only COS and XOS upgrades can be initiated.

Asset Management

SecureShore asset reports capture all Crossbeam device and module information, including serial numbers, in an exportable comma delimited file – complete Crossbeam inventory at the touch of a button.

Job Scheduling

Certain tasks can be scheduled to occur at a pre-determined time and others to occur as soon as they are actioned. SecureShore maintains a list of jobs with current status, allowing the user to monitor the progress and mark when a job has finished. The list view displays start and end time for the job, the administrator user who started the job, and the type of job. A more detailed list for troubleshooting is also available within the log archive for each job.

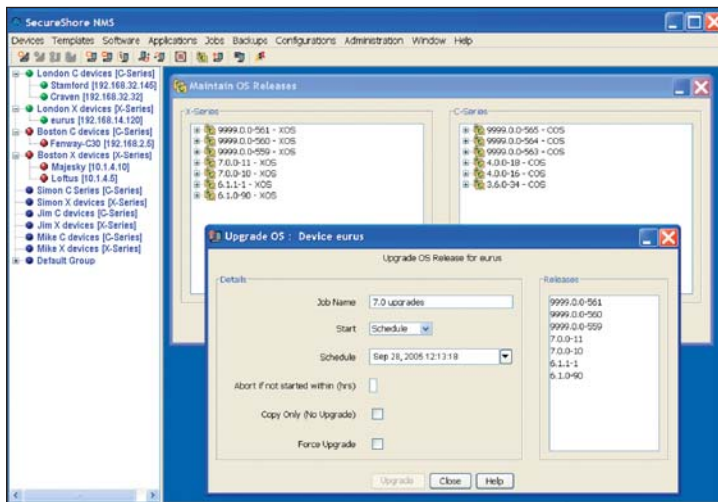
Tiered Role-based Administration

SecureShore controls user logins through a set of roles and groups. The master administrator account has full system access and can create a flexible suite of sub-admins. Administration access can be limited by device, group, and distinct SecureShore features. For example, it may be desirable to limit management access to a particular set of security switches, or to setup an account with back-up privileges only.

Complementary Management

SecureShore complements our product element management systems (EMS) and command line interface (CLI), and the existing policy management systems from our market-leading partners such as Check Point SmartCenter, SourceFire Management Center, Trend Micro Control Manager, Websense Management, etc.

Additionally, SecureShore can engage with both multi-vender NMS and high-level managers of managers like HP Openview and IBM Tivoli. With SNMP support, SecureShore provides alarm information, stores and collects log files, and act as a conduit to direct device management.



Admin selects an OS from releases list and schedules the upgrade A template of user accounts that can be configured on multiple devices.

Technical Specifications

SYSTEM SPECIFICATIONS	
Server	Crossbeam C2 or C6 devices running COS 4.1 CSLINUX_V3 or PC server running Linux RH EL 3, with Postgres 7.3 or higher RDMS (client and server packages); 1 GB disk space or higher
Client	PC with Java Runtime Environment (JRE) V1.5 or later
Supported OS	C-Series devices running COS version 3.6.0 or later X-Series devices running XOS version 6.1.1 or later



About Crossbeam Systems

Crossbeam Systems, Inc., secures the world's largest networks with its pioneering best-of-breed Unified Threat Management (UTM) solutions. Crossbeam enables companies to consolidate their security infrastructures while preserving their security policies, resulting in significant savings in capital and operational expenses. Crossbeam's patent-pending architecture integrates best-in-class security engines such as firewall, virtual private networks, intrusion detection, and content security into high-performance, highly available, self-healing security services switches. The company has tailored security solutions for global corporations, carrier networks, and small to medium-sized enterprises. More information is available at www.crossbeamsystems.com.



www.crossbeamsystems.com

Corporate Headquarters
80 Central Street
Boxborough, MA 01719 USA

p: [+1] 978-318-7500
f: [+1] 978-287-4210

European Headquarters
E. Space, Bat C.
45 allée des Ormes
06250 Mougins – France
p: [+33] (0)4 92 28 89 89
f: [+33] (0)4 92 28 72 60

Asia Pacific Headquarters
80 Raffles Place
Levels 36 UOB Plaza 1
Singapore 048624
p: [+65] 6248 4684
f: [+65] 6248 4988

Crossbeam Systems is proud to partner with these best-in-class vendors:



We Secure the Internet.



TREND
MICRO

