

DATA SHEET: Central Management Console (CMC)

Riverbed's Central Management Console (CMC) is a turnkey solution for centrally managing Steelhead appliances distributed across a wide area network (WAN).

Using the CMC, administrators can centrally configure, manage, and report on distributed Steelhead appliances, while gaining visibility into the underlying performance of applications running across a WAN.

With such powerful management and visibility functions, the CMC can reduce the total cost of ownership (TCO) of a Riverbed Steelhead deployment even further.

Centralized Configuration, Monitoring, and Control of Riverbed Steelhead® Appliances

The Riverbed Central Management Console simplifies the process of deploying, configuring, and managing Steelhead appliances. With just a few clicks, administrators are in full control of their Steelhead appliance deployment. Configuring, updating, and monitoring Steelhead appliances are all done through one Web-based interface.



The CMC also provides visibility into how applications are performing across a WAN. Reporting metrics such as WAN traffic levels, application throughput performance, and TCP session flow characteristics can be displayed over configurable intervals of time going back a full year. Variable reporting modes provide underlying application insight needed to help diagnose problems and maintain the control over your WAN application infrastructure.

FEATURE HIGHLIGHTS

Central Configuration

- Touchless Steelhead configuration
- Flexible group management
- Intuitive configuration profiles
- Scheduled operations
- Central configuration and image libraries
- SSL certificate management

Central Health Monitoring

- Appliance and network health monitoring
- Central log retrieval
- CMC-specific SNMP MIB

Global Performance Reporting

- Aggregated performance reports
- Dynamic report generation
- Customizable pages

Security

- HTTPS access to CMC
- IPSEC encrypted auto-registration exchange
- Steelhead to CMC conversations over SSH
- Radius/TACACS+ authentication
- Monitor (read-only) and Admin (read/write) access
- Secure device registration

Feature Details

Touchless Steelhead configuration. With the CMC, a new Steelhead appliance can be deployed with minimal administration. Steelhead appliances will automatically contact the CMC for configuration and operation information, and start accelerating applications immediately.

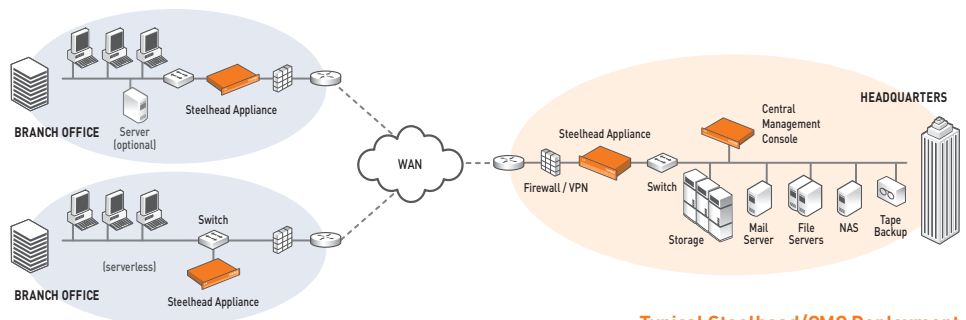
Flexible group management. The CMC's powerful grouping feature provides administrators with the flexibility of creating groups of Steelhead appliances based on geographical location, business function, or personal preference. Once groups have been created, an administrator can broadcast a configuration to a specific group, or to multiple groups as desired.

Intuitive configuration profiles. The CMC provides an intuitive "configuration profile" method for managing configurations across an entire Steelhead appliance deployment. Profiles are a set of configuration values that may be created, edited, re-used from existing configurations, and applied to target Steelhead appliances. For example, a complex QoS rule set can be made part of a configuration profile and then applied in one step to a group of Steelhead appliances.

Central configuration and image libraries. The CMC provides the capability to archive and install both configuration files and software images to and from distributed Steelhead appliances.

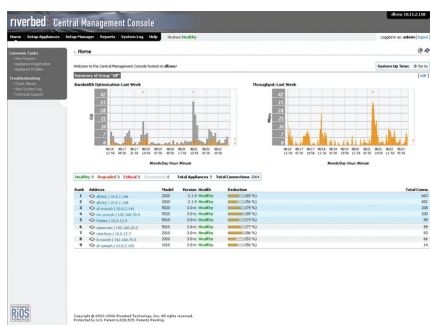
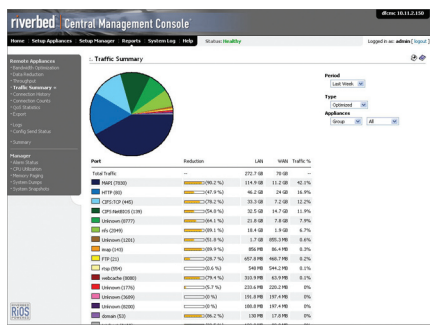


WAN Optimization - Riverbed RiOS 3.0



Typical Steelhead/CMC Deployment

DATA SHEET: Central Management Console (CMC)



Scheduled operations. The CMC provides a facility to schedule any Steelhead function or configuration. Software updates can be scheduled for after-hours, or optimization policies can be scheduled to take effect at a specific time.

Appliance and network health monitoring. The CMC presents a centralized view of the health and status of a group or all Steelhead appliances. Each Steelhead appliance has its status reported by the CMC as healthy, degraded, or critical based on monitoring a number of health elements. Round-trip times and loss rates on links between Steelhead pairs are collected by the CMC to provide a high-level overview of general network health.

Central log retrieval. The CMC consolidates the viewing and retrieval of one or all Steelhead appliance logs in the network.

SNMP support. The CMC supports SNMP MIBs. IT departments can use SNMP to monitor Steelhead appliances through a 3rd party management system.

Aggregated performance reports. The CMC provides the ability to centrally view performance statistics for all Steelhead appliances network-wide, or from a specific group of Steelhead appliances. Global statistics also can be represented by QoS classes or applications (optimized and pass-through). View a sortable list of all appliances/groups and their individual performance statistics, or view graphed representations of all appliances or a group's aggregate performance.

Dynamic report generation. With a few clicks of a mouse, select ports/applications/appliances and generate performance reports spanning a configurable window of time up to 12 months in the past. Want to quickly see throughput performance for FTP and HTTP for the first week of last June? Select these two ports and the time interval to see the report almost instantaneously. Customized reports can be emailed regularly to one or more recipients, further simplifying management of large numbers of Steelhead appliances.

Customizable pages. Choose which statistics and group to display on both the Summary and Home Pages. The CMC allows per-statistic configuration, including trending interval and traffic direction, and even changing the text label representing the performance chart. Automatic port and application discovery facilitates the creation of insightful reports.

Security. The CMC provides password-protected administrator (read-write) and monitor (read-only) access levels. Radius and TACACS+ environments are supported for seamless integration into existing authentication systems. In addition, SSL is supported when accessing the CMC from a web browser and communication between the CMC and Steelhead appliances is performed over SSH. Finally, only Steelhead appliances that are approved may connect with the CMC and the rest of the network.

SPECIFICATIONS

Compatibility

- Full feature compatibility with Steelhead appliances running RiOS 3.0 or higher
- Limited support for Steelhead appliances running earlier releases of RiOS

Web Browser

- Web browser support
- Most major browsers running current versions
- Tested with Mozilla and Internet Explorer

Platform

- 1U rack mount chassis

Number of Appliances Managed

- CMC 8001: Up to 10 Steelhead appliances
- CMC 8002: Up to 25 Steelhead appliances
- CMC 8003: Up to 50 Steelhead appliances
- CMC 8004: Up to 100 Steelhead appliances
- CMC 8005: Up to 200 Steelhead appliances
- CMC 8006: Up to 500 Steelhead appliances

About Steelhead Appliances

Riverbed is the performance leader in wide-area data services (WDS) solutions. Riverbed's award-winning Steelhead appliances accelerate enterprise applications typically by five to 50 times and in some cases up to 100 times between enterprise data centers and remote offices.

The Steelhead appliance's intelligent optimizations give companies that share data and collaborate between distributed offices significant performance improvements for a broad range of applications that are important to their businesses, offering these companies the ability to simplify IT infrastructure and realize significant capital and operational cost savings.

Riverbed Technology, Inc.
199 Fremont Street
San Francisco, CA 94105
Tel: +1 415 247 8800
Fax: +1 415 247 8801
www.riverbed.com

Riverbed Technology Ltd.
1, The Courtyard, Eastern Road
Bracknell
Berkshire RG12 2XB
United Kingdom
Tel: +44 1344 354 910

Riverbed Technology Pte. Ltd.
350 Orchard Road #21-01/03
Shaw House
Singapore 238868
Tel: +65 68328082

Riverbed Technology K.K.
Shiba-Koen Plaza Building 9F
3-6-9, Shiba, Minato-ku
Tokyo, Japan 105-0014
Tel: +81 3 5419 1990